


606 Open Racks

Technical Data

Materials:		
· SPCC Cold Rolled Steel;	· others:2.0mm.	
· Column: 1.5mm;		
Colour:		
· ZC605.■■■■■ ■■0■■: RAL7035.		
· ZC605.■■■■■ ■■1■■: RAL9004.		
Loading Capacity:		
· Static loading:250KG.		

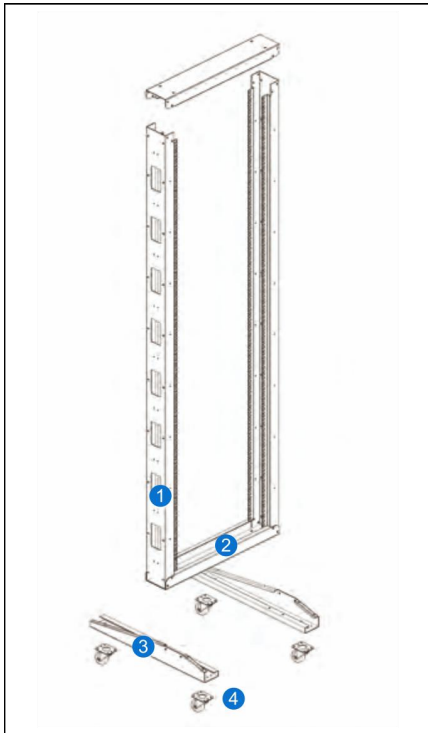
COMPLIANCE (Reference Standard)

- Comply with ANSI/EIA RS-310-D
- IEC60297-2
- DIN41494;PART1; DIN41494;PART7.

Quality advantages of cabinet products:

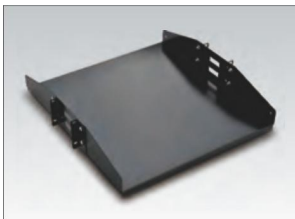
- Our cabinet products are made of high-quality SPCC thick cold-rolled steel plates, processed by advanced condensation technology, and have excellent compression and seismic resistance;
- The surface is galvanized with square hole-resistant strip fingerprint aluminum, and the The factory's automatic production of molds and laser cutting make the products stable, exquisite and delicate;
- With a complete art production chain, each part of the product is degreasing, pickling, phosphating, and electrostatic spraying, which greatly improves the product's quality. Anti-oxidation and anti-corrosion ability;
- The finished product has undergone strict quality inspection, screening and control, and fully meets the above-mentioned standards to ensure that Zion's products must be exquisite.

Feature:

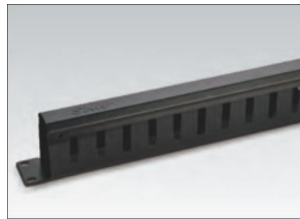


- Modular design, easily assemble and disassemble for delivery, low-cost.
- Various optional accessories according to requirements (cable management slot, removable working panel, etc.,)

May Installs The Fitting



· Double Sided Shelf



· Cantilever shelf



· Cable management

Main Part

S/N	Specification	Qty	Material	Surface Finish	Remark
1	Column	2	SPCC t1.5	Powder coated
2	Plinth	2	SPCC t2.0	Powder coated
3	Support Cross beam	2	SPCC t2.0	Powder coated
4	2" heavy duty castor	4		
A	M6 screw & nuts	20	Steel	Colour zinc	40pcs for over 33U
B	Trox tooling	1	Steel	Black

Specification:

Company Number.	Part Number.	RU	Width (mm)	Depth(D)(mm)	Height(H) (mm)	Volume (CBM)
7245106	ZC606.6629.00. ■00	29	600	600	1422	1420*260*140
7245107	ZC606.6633.00. ■00	33	600	600	1600	1600*260*140
7245108	ZC606.6638.00. ■00	38	600	600	1822	1820*260*140
7245109	ZC606.6642.00. ■00	42	600	600	2000	2000*260*140
7245110	ZC606.6647.00. ■00	47	600	600	2222	2220*260*140