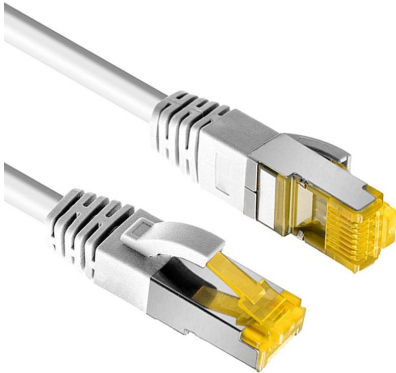


7241006 CAT.7A S/FTP RJ45 Patch Cord

Application:



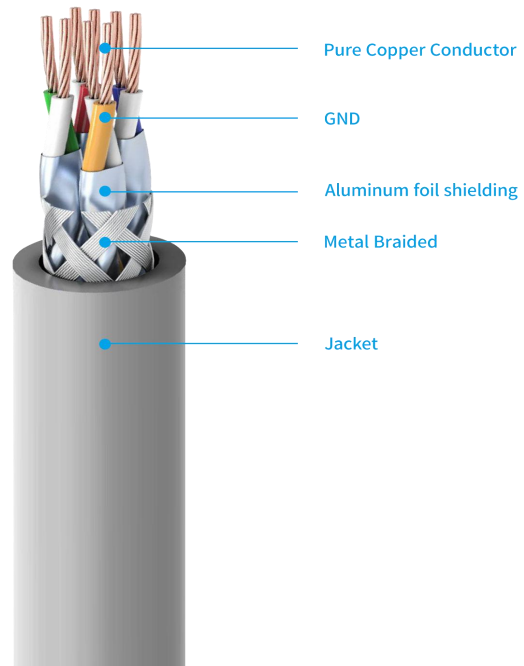
Category 7A cabling systems is playing a major role in data centers and mission-critical environments upgrading to 10GBASE-T.

ZION Communication CAT7A S/FTP Patch Cords conforms to ANSI/TIA/EIA-568.2-D, ISO/IEC 11801, IEEE and CENELEC EN50173 for Category 7. The patch cords are 100% (FLUKE DSX 8000) tested per Cat.7A Channel up to 1000 MHz. Designed for high speed protocols such as IEEE 802.3:10Base-T, 100Base-T, 1000Base-T, 10GBase-T, HDBase-T A & B and ATM,

Specification:

Patch Cable

Conductor:	Stranded bare copper
Pairs:	4 Pairs
Insulation:	Skin-Foam-Skin PE
Insulation Color Per TIA/EIA 568-B	Orange, White/White-Orange
	Blue, White/White-Blue
	Green, White/White-Green
	Brown, White/White-Brown
Individual Shield :	Pair in Al/PET Foil, Aluminum face outwards, 100% coverage
Overall Shield:	TC or Al_Mg Braiding, Coverage: >30%
Out Jacket:	LSZH OR PVC
Frequency Range	1 - 1000 Mhz
Impedance	100Ω
Max.Resistance Unbalance	2%
Current Rating	1.5A
Voltage	30 VAC / 56 VDC
Operating Temp.	Min. -40 °C, Max. +65 °C

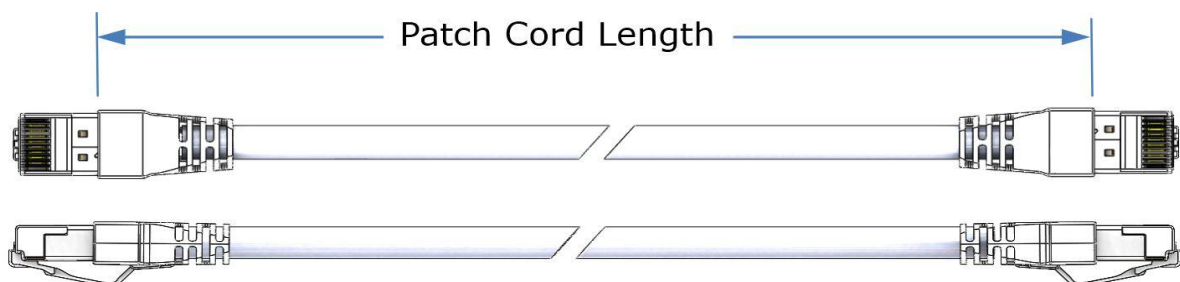


Connector

Description	Material	Type
Plug	Polycarbonate	RJ45
Boot	LSZH OR PVC	Snagless
Front Connection	Phosphor Bronze with 50u inch Gold over Nickel Plating	Blades
Shielding	Copper Alloy, Nickel plated	
Durability	750 Mating Cycles min.	

Characteristics:

VERSION	CLASS	MAX. OPERATING FREQUENCY	SHIELDING TYPE	PLUG CONNECTOR	USED FOR	NOTE	NORMAL
Cat 7A	G (I)	1000MHz	S/FTP	RJ45	10GBase-T (Lengths of 20m)	Faster server interconnection. Connections in data centres.	ISO/IEC TR 11801-99-1



Product Code:

SF7A 1 C V 03M GR

① ② ③ ④ ⑤ ⑥

Cable Type	Number of conductor wires	Conductor material	Outer sheath material	Cable length	Outer sheath color
SF7A= S/FTP CAT7A	2=7/0.16	C=Bare Copper	V= PVC O=LSZH	03=0.3M; 7.5=7.5M 05=0.5M; 10=10M 1=1M; 15=15M 2=2M; 20=20M 3=3M; 30=30M 5=5M;	○ White ● Pink ● Brown ● Blue ● Green ● Red ● Yellow ● Black ● Grey ● Violet
①	②	③	④	⑤	⑥

Ordering Information

CAT 7A S/FTP 26AWG Copper Conductor RJ45 Patch Cord

Conductor: 7/0.16mm Copper; Cable OD:6.2±0.2mm; Max Length: up to 20meter.



Zion Code	Description
SF7A2CO05MGR	CAT 7A S/FTP 26AWG Copper RJ45 Patch Cord,LSZH,Gray, 0.5m
SF7A2CO1MGR	CAT 7A S/FTP 26AWG Copper RJ45 Patch Cord,LSZH,Gray, 1m
SF7A2CO2MGR	CAT 7A S/FTP 26AWG Copper RJ45 Patch Cord,LSZH,Gray, 2m
SF7A2CO3MGR	CAT 7A S/FTP 26AWG Copper RJ45 Patch Cord,LSZH,Gray, 3m
SF7A2CO5MGR	CAT 7A S/FTP 26AWG Copper RJ45 Patch Cord,LSZH,Gray, 5m
SF7A2CO7AMGR	CAT 7A S/FTP 26AWG Copper RJ45 Patch Cord,LSZH,Gray, 7Am
SF7A2CO10MGR	CAT 7A S/FTP 26AWG Copper RJ45 Patch Cord,LSZH,Gray, 10m
SF7A2CO15MGR	CAT 7A S/FTP 26AWG Copper RJ45 Patch Cord,LSZH,Gray, 15m
SF7A2CO20MGR	CAT 7A S/FTP 26AWG Copper RJ45 Patch Cord,LSZH,Gray, 20m

OEM/ODM service for you

ZION Communication has rich experiences in producing OEM/ODM cases because of Profession R & D team.

- Customized Logo on Plug & Boot
- Printing on Cable
- Label/PE bag/Carton design
- Different Color & Different Lengths Available
- Different Molding/Strain Relief

Packing

