


PE Cabinets

Technical Data

Materials:		
· SPCC Cold Rolled Steel;	· 19" rails: 2.0mm;	
· others:1.2mm.		
Colour:		
· ZCPE■■■■■ ■■■0■■■: RAL7035.	· ZCPE■■■■■ ■■■1■■■: RAL9004.	
Loading Capacity:		
· Static loading:800KG.		

COMPLIANCE (Reference Standard)

- Comply with ANSI/EIA RS-310-D
- IEC60297-2
- DIN41494;PART1; DIN41494;PART7.

Quality advantages of cabinet products:

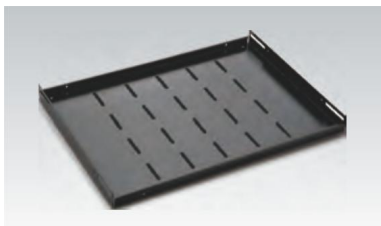
- Our cabinet products are made of high-quality SPCC thick cold-rolled steel plates, processed by advanced condensation technology, and have excellent compression and seismic resistance;
- The surface is galvanized with square hole-resistant strip fingerprint aluminum, and the The factory's automatic production of molds and laser cutting make the products stable, exquisite and delicate;
- With a complete art production chain, each part of the product is degreasing, pickling, phosphating, and electrostatic spraying, which greatly improves the product's quality. Anti-oxidation and anti-corrosion ability;
- The finished product has undergone strict quality inspection, screening and control, and fully meets the above-mentioned standards to ensure that Zion's products must be exquisite.

Feature

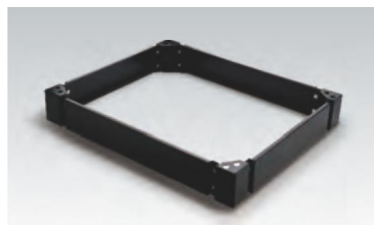


- Flat packing and patent frame. packing time is less than 20 minutes.
- Exquisite design with precise dimension and craftsmanship;
- Several styles of front and rear door options available;
- Adjustable feet and heavy duty castors are available simultaneously;
- Cable entry on the top cover and bottom panel with adjustable sizes;
- Optional installation of plinth to enable cabinets fixation, under-base cable entry/ventilation;
- Efficient and reliable cabinet connection by buying kit;
- Removable side panels to ease maintain;

Definition Of Cord



· Shelf.



· Plinth.



· Fan Units.

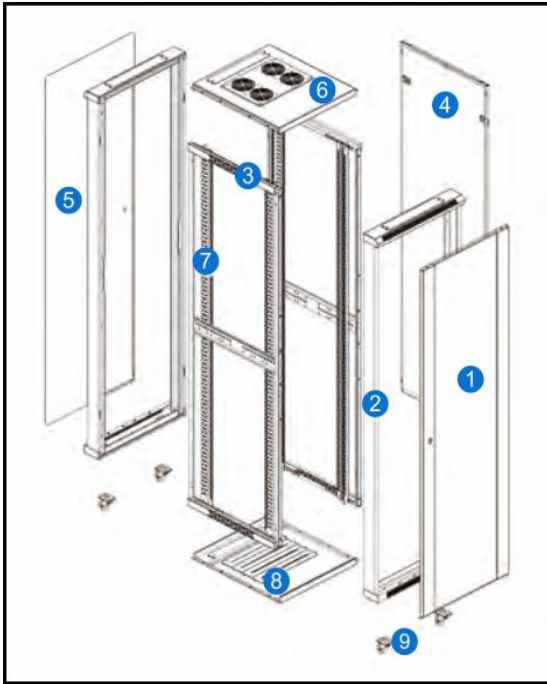


· M6 Screws & nuts.



· PDU.

Definition Of Cord



PE ■■■ ■ 00

Definition of color:0-RAL7035; 1-

Definition of rear door:

- 0-Tempered glass door;
- 1-Tempered glass door with striped hole;
- 2-Tempered glass door with hexagon hole;
- 3-Sheet steel door;
- 4-Sheet steel door with hexagon hole;
- 5-High-density vented door;
- 6-High density double opened door with

Definition of front door:

- 0-Tempered glass door;
- 1-Tempered glass door with striped hole;
- 2-Tempered glass door with hexagon hole;
- 3-Sheet steel door;
- 4-Sheet steel door with hexagon hole;d door

Cabinet capacity:(U)

Cabinet

Cabinet width:(MM):

Main Part

S/N	Specification	Qty	Material	Surface Finish	Remark
1	Front door	1	Powder coated	See next page
2	Frame	2	SPCC t1.2	Powder coated
3	Side frame	2	SPCC t1.2	Powder coated
4	Side panel	2	SPCC t1.2	Powder coated	≥ 1000 width cabinets need 4 panels
5	Rear door	1	Powder coated	See next page
6	Top cover	1	SPCC t1.2	Powder coated
7	19"rails	4	SPCC t2.0	Powder coated
8	Bottom	1	SPCC t1.2	Powder coated
9	2" heavy duty castor	4
A	M12 adjustable feet	4	v
B	M6 screw & nuts	20	Steel	Color zinc	40pcs for over 33U
C	Trox tooling	1	Steel	Color zinc

The 600mm width cabinet can be changed to the 800mm width one, only need to put the connecting panel and 2 cable management slots. Support 19" EIA equipment.

Specification:

Company Number	Part Number.	Width (mm)	Depth(D) (mm)	Capacity (U)	Height(H) (mm)	CKD paching parts
7243235	ZCPE.6615.PESC	600	600	15	800	3
7243236	ZCPE.6620.PESC			20	1000	
7243237	ZCPE.6624.PESC			24	1200	
7243238	ZCPE.6629.PESC			29	1400	
7243239	ZCPE.6633.PESC			33	1600	
7243240	ZCPE.6638.PESC			38	1800	
7243241	ZCPE.6642.PESC			42	2000	
7243242	ZCPE.6647.PESC			47	2200	
7243243	ZCPE.6815.PESC		800	15	800	
7243244	ZCPE.6820.PESC			20	1000	
7243245	ZCPE.6824.PESC			24	1200	
7243246	ZCPE.6829.PESC			29	1400	
7243247	ZCPE.6833.PESC			33	1600	
7243248	ZCPE.6838.PESC			38	1800	
7243249	ZCPE.6842.PESC			42	2000	
7243250	ZCPE.6847.PESC			47	2200	
7243251	ZCPE.6938.PESC	900	38	1800	3	
7243252	ZCPE.6942.PESC		42	2000		
7243253	ZCPE.6947.PESC		47	2200		
7243254	ZCPE.6038.PESC	1000	38	1800		
7243255	ZCPE.6042.PESC		42	2000		
7243256	ZCPE.6047.PESC		47	2200		
7243257	ZCPE.8638.PESC	800	600	38	1800	4
7243258	ZCPE.8642.PESC			42	2000	
7243259	ZCPE.8647.PESC			47	2200	
7243260	ZCPE.8838.PESC		800	38	1800	
7243261	ZCPE.8842.PESC			42	2000	
7243262	ZCPE.8847.PESC			47	2200	
7243263	ZCPE.8938.PESC		900	38	1800	
7243264	ZCPE.8942.PESC			42	2000	
7243265	ZCPE.8947.PESC			47	2200	
7243266	ZCPE.8038.PESC		1000	38	1800	
7243267	ZCPE.8042.PESC			42	2000	
7243268	ZCPE.8047.PESC			47	2200	

Packing dimensions: Carton width=cabinet width+40mm, Carton depth=cabinet depth+40mm, Carton height=cabinet high+90mm



- **Front&Rear Door (type 0)**
Tempered glass door
Small lock;
Reversible right or left handed doors;
Turning angle is over 180 degrees;
- **Material:** Sheet steel 5MM safety glass
- **Surface Finish:** Powder coated



- **Front&Rear Door (type 1)**
Tempered glass door with striped hole. Gray decoration bar;
Small lock;
Reversible right or left handed doors;
Turning angle is over 180 degrees;
- **Material:** Sheet steel 5MM safety glass
- **Surface Finish:** Powder coated



- **Front&Rear Door (type 2)**
Tempered glass door with net hole. Gray decoration bar;
Lock with comfort handle ;
Reversible right or left handed doors;
Turning angle is over 180 degrees;
- **Material:** Sheet steel 5MM safety glass



- **Front&Rear Door (type 3)**
Sheet steel door.
Small lock;
Reversible right or left handed doors;
Turning angle is over 180 degrees;
- **Material:** Sheet steel
- **Surface Finish:** Powder coated



- **Front&Rear Door (type 4)**
Sheet steel door with hexagon hole.
Small lock;
Reversible right or left handed doors;
Turning angle is over 180 degrees;
- **Material:** Sheet steel
- **Surface Finish:** Powder coated



- **Front&Rear Door (type 5)**
High-density vented door;
Slotted surface (SW7 hexagon) Air inlet opening>60%;
Lock with comfort handle;
Reversible right or left handed doors;
Turning angle is over 180 degrees;
- **Material:** Sheet steel

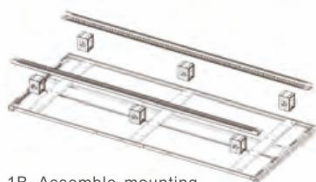
Assembling Draft

Attention

Please remove front/back door and side plane from the frame prior to unpacking



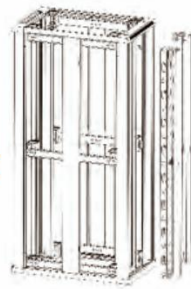
1A. Assemble mounting rail(only width 600mm). (Screw M6x12 & nuts).



1B. Assemble mounting rail and spacer (only width 800mm). (Screw M6x12 & nuts).



2A. Assemble frame(only width 600mm). (Screw M6x12 & nuts).



3. Assemble top cover, bottom panel, adjustable feet, castor(screw M5x10).

